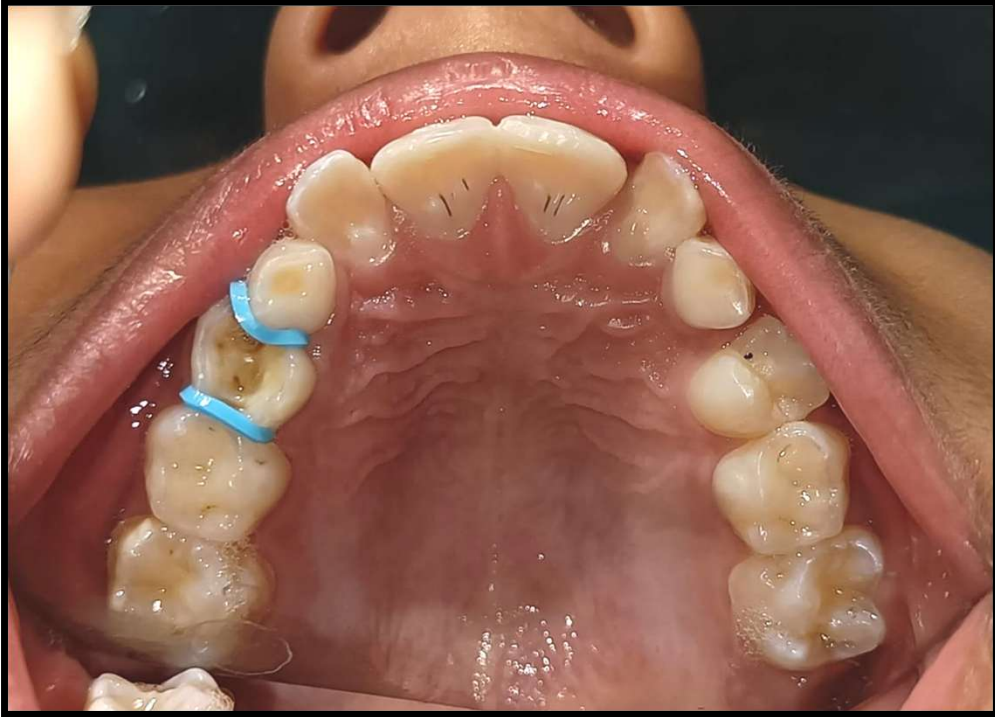


Halls technique



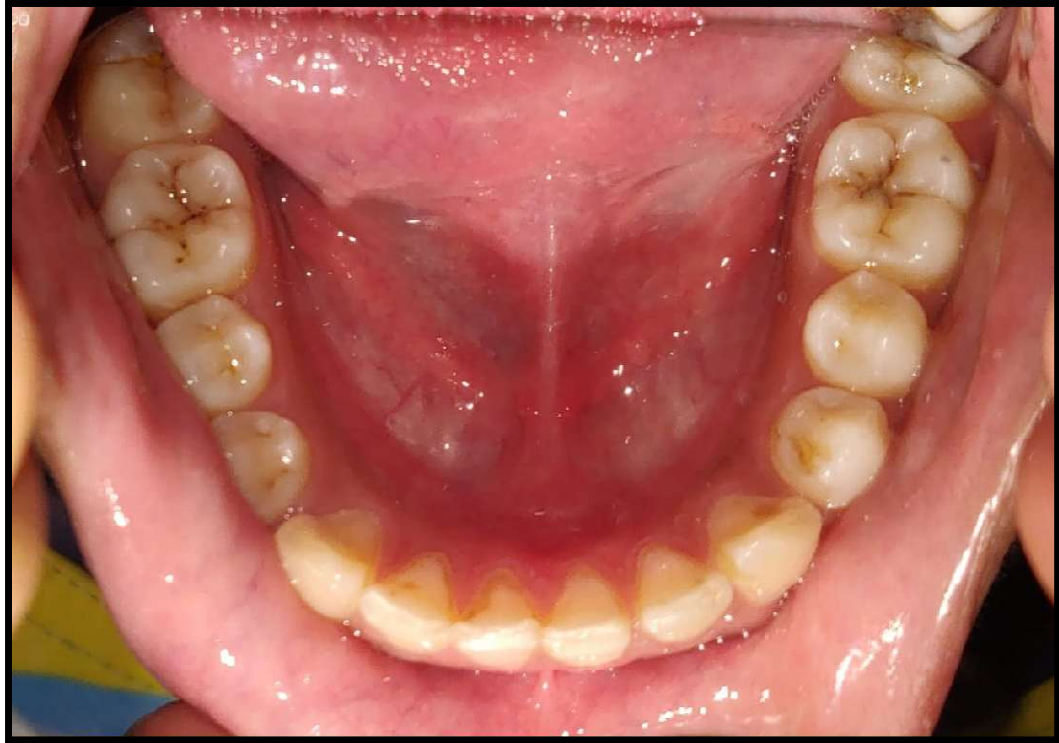




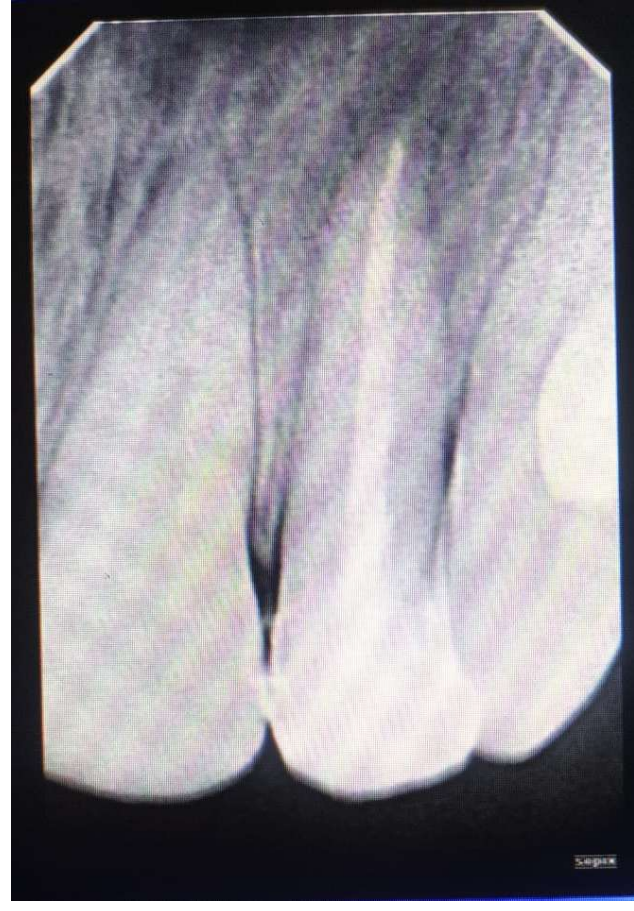




Post and core







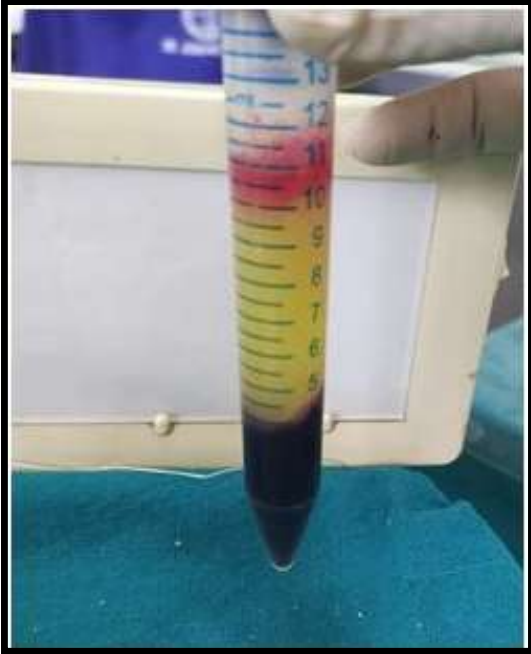
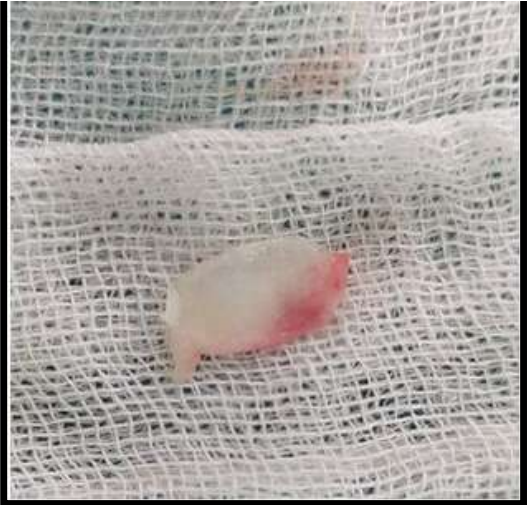


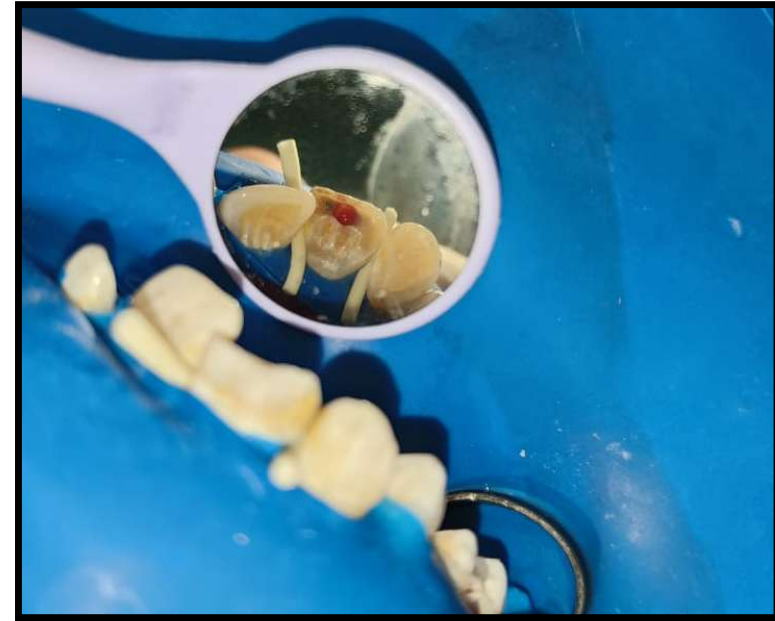


Regenerative Endodontic Procedure









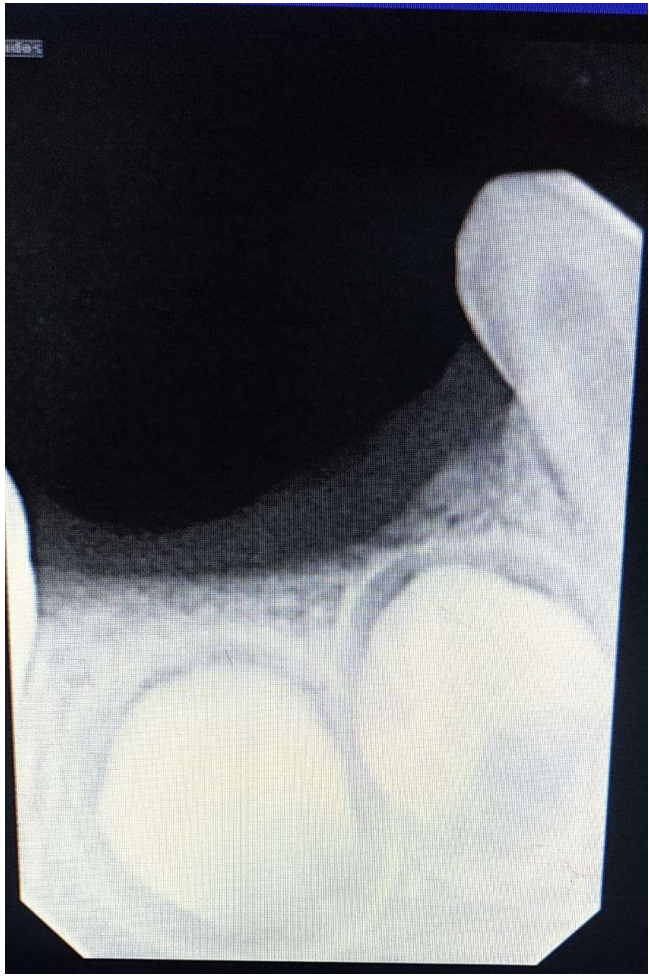


**Nance palatal
space maintainer
with upper arch**

**Functional
removable space
maintainer with
lower arch**











Space Regainer













**Intrusion
with 52**



**Extraction done with
51,61,62**

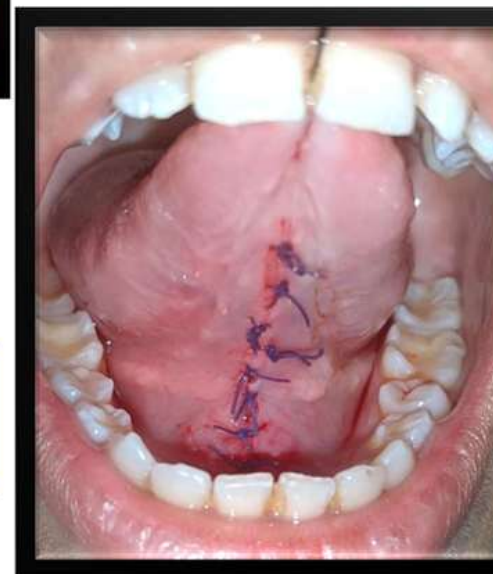


Identification of the frenulum



Incision along the length of frenulum

Haemostasis and closure of the frenulum





About 2.5mm extrusion irt 21



EXTRUSION IRT 21 CASE



Surgical reposition with 21



Etching



Splinting

